

75 years success in Tire Cord Lines

Products

- Tire Cord Lines
- Single End Lines
- Conveyor Belt Lines
- Dip Mixing Preparation Units (CDM)
- Customer Service / Modernizations / Spare Parts
- Process and Environmental Technologies
- Engineering & Consultancy
- Special textile applications

Facts and Figures

- Benninger Zell GmbH is a wholly-owned subsidiary of Benninger AG, Uzwil / Switzerland founded in 1859
- First tire cord machine was delivered in 1939
- 2014 and 2015 awarded as a family-friendly company
- ISO9001 certified

Your advantages

- Reliable and proven layout for maximum machine availability
- Established, user-friendly Human Machine Interface
- Reproducible fabric quality
- Short start-up times (<40 days)
- Recommended by all leading tire and fabric manufacturers
- Cost effective 24/7 operation
- Responsible use of natural resources



Your contact



Thomas Soika
Sales Manager
Tel.: +49 (0) 7625 131 110
thomas.soika@benningergroup.com



Sarah Hoffmann
Sales Assistant
Tel.: +49 (0) 7625 131 173
sarah.hoffmann@benningergroup.com



Roland Grunhofer
Head of Customer Service / Site Management
Tel.: +49 (0) 7625 131 222
roland.grunhofer@benningergroup.com



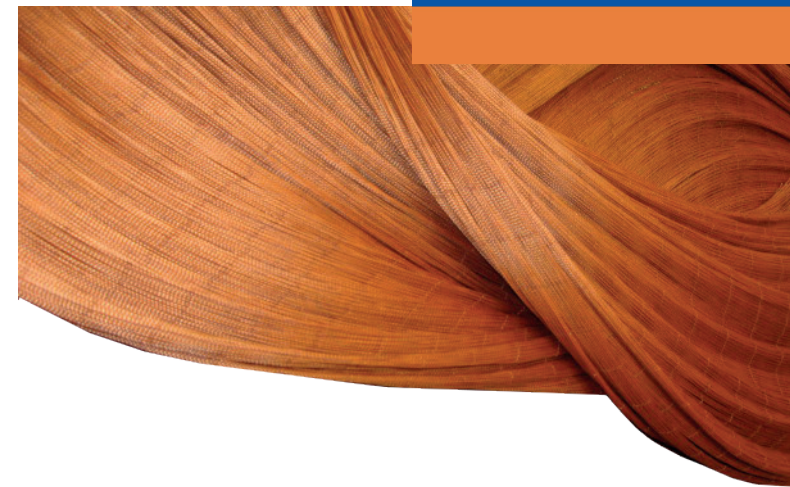
Isabell Hilbel
Assistant of Customer Service / Site Management
Tel.: +49 (0) 7625 131 112
isabell.hilbel@benningergroup.com

Benninger Zell GmbH
Schopfheimer Str. 89 | 79669 Zell im Wiesental - Germany
Telefon: +49 (0) 7625 131 0 | Fax: +49 (0) 7625 131 298
tirecord@benningergroup.com
www.benningergroup.com



Awarded 2015
as a family-friendly
company

Version 11/2015



Trio Canter HS High Dynamic Version

Exclusively designed
by Benninger Zell

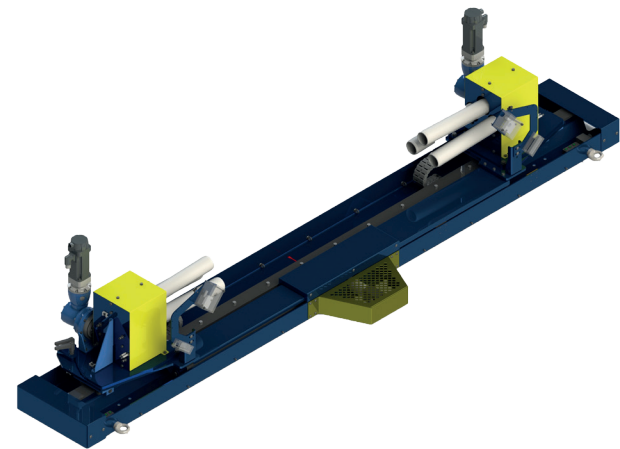
Trio Canter HS

High speed for textile applications

We develop and continuously enhance our products to meet the rising requirements at higher line speeds. Trio Canter HS is characterized by precise regulation to the fabric speed especially in challenging locations e.g. in front of the Winder.

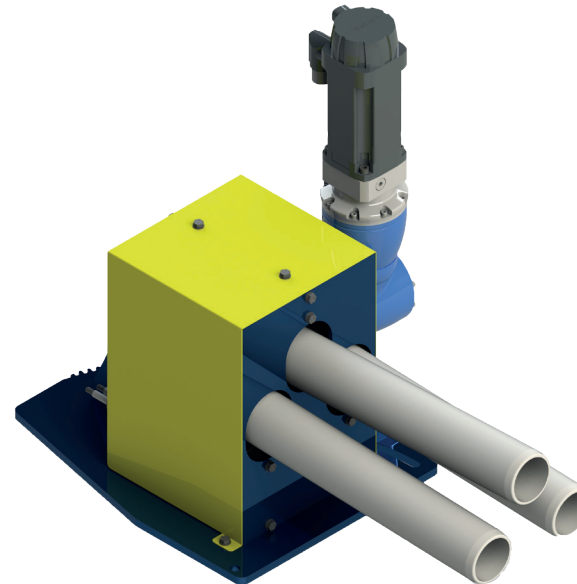
Unique features tailored to your needs

- perfect fabric roll build-up at highest line speeds
- direct and rapid reaction of the fingers to change the edge position
- highest availability through setting change within seconds
- optimum fabric guiding from the start of the winding process
- extended range of fabric weights



Key figures at a glance

Properties	Trio Canter	Trio Canter HS
Max. line speed	150 m/min	250 m/min
Signal processing time	approx. 10 ms	approx. 4 ms
Drive	AC-Motor FU controlled	Servo Motor FU controlled
Fabric weight	200-500 g /m ²	60-500 g/m ²



New generation of Operator Panels

Benefits

- ergonomic shape for easy operation
- intuitive user interface supported by symbols to further reduce operating errors
- multilingual
- new Operator Panels for all guiding devices

Extended functions

- set point preparation for the next fabric width
- time auto open function: if the fabric exceeds the time of sensor covering and at splice passing

